



# **PAINT LAKE VOLUNTEER FIRE DEPARTMENT FIRE HALL EXPANSION**

**A Special Thank You to these  
people for all their help and  
contributions towards this project**

## **PLCOA Members**

Mike Langridge  
Mel Muzroll  
Dayton Barenz  
Andrea Hatley  
Shelley Carey  
Nick DiVirgilio  
Jack Lucas  
Joe Dobbin  
Maxine Larway

## **PLVFD Executive**

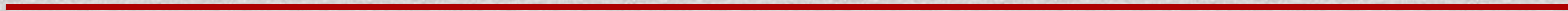
Joe Dobbin  
Loren Thevnot  
Mark McClelland  
Tom Crawford  
Jeff Jubenvill  
Mike Dickson  
Darin Kulbaski  
Edith Steeves  
Jim Nicholls  
Frank DeRose

## **Building Design Committee**

Nick DiVirgilio  
Mark McClelland  
Joe Dobbin  
Bill Bowman  
Frank DeRose  
Jim Nicholls

## **Fund Raising Committee**

Mel Muzroll  
Joe Dobbin  
Dayton Barenz  
Mike Langridge  
Shelley Carey  
**Volunteers Needed!**





# PAINT LAKE VOLUNTEER FIRE DEPARTMENT FIRE HALL EXPANSION BRIEF HISTORY OVERVIEW

- In the past, structural fires had made cottage owners aware that AT BEST, it would take a truck and crew from Thompson a minimum of 30 minutes to action a cottage fire at Paint Lake IF they were not otherwise deployed for fire(s) in town. It was realized that due to the combination of all the total values of cottages, marina and other facilities at Paint Lake Provincial Park, a faster response time was needed. HELITAC are not trained to fight structural fires, and often can be engaged with wildfire suppression elsewhere, and HELITAC crews are seasonal.
- PLVFD was formed in 1995 by a group of cottagers after the development of five new blocks of cottage lots along Paint and Liz Lakes by the Lakefront Co-Op Inc. to address the problem.
- Fund Raisers and “sold out” events were held to raise the money needed to build the current PLVFD Fire Hall. Along with various other events, socials, presentations and a letter from NDP Steve Ashton (Minister of Conservation), these events brought the Paint Lake Community together to raise the funds needed, and the Fire Hall was built with the Grand Opening held on October 30<sup>th</sup>, 2004.
- Initially, the building was built to house the Command Truck (250 gal capacity) gear and pumps. An additional 3 Ton 650 gallon capacity tanker truck was acquired to add to the 800 gallon requirement for official recognition and also parked inside the hall.

---

We live in The North, the greatest risk to us here in Paint Lake Provincial Park are forest fires. Our Mission at the PLVFD is to Protect Lives and Property here from the effects of fire.



# PAINT LAKE VOLUNTEER FIRE DEPARTMENT FIRE HALL EXPANSION

## WHY DO WE NEED A FIRE HALL & VOLUNTEERS?

- Annual Budget covers maintenance, operating costs, workers compensation, MPI, yearly inspections and purchase of new equipment & safety gear for the volunteer firefighters.
  - Since formed, the PLVFD has responded to about 8 house fires and about 3 wildfires in our community. The PLVFD is a perimeter control group and is not equipped to enter buildings and fight fires from within, only to save adjacent buildings, structures and control the source of the fire from spreading and to protect the community and public from harm. **PEOPLE'S SAFETY COME FIRST!**
  - PLVFD not only protects our properties, but on average the fact that we have a Fire Department of any kind, saves each and every cottage owner between **\$300 to \$1000** per year in home insurance premiums. For some who have lived out here, they may have saved a few thousand dollars **BECAUSE OF** the PLVFD!
  - PLVFD is made up of Volunteers from our Paint Lake Community, people like Jim Nichols who has served vigilantly and proudly since the PLVFD was formed, among others who are our neighbors, friends, co-workers and owners of various places of business in Thompson. Without these people volunteering their time and experience, the next fire to happen at Paint Lake may be yours or your neighbors home. Who would keep your best interests in mind to fight & control that fire until Thompson Fire Department arrives?
-



# PAINT LAKE VOLUNTEER FIRE DEPARTMENT FIRE HALL EXPANSION

## WHY DO WE NEED TO BUILD THIS EXPANSION?

- Another truck was acquired in late 2012, which is an actual Fire truck, donated to the PLVFD by Snow Lake. It's intent was to bolster the capacity and capabilities of the PLVFD. Minor repairs and testing by the PLVFD have been completed, so now this pumper unit doubles our ability to "throw water at a fire". This unit sat outside all winter long, drained and winterized because we have **no room** for it inside the current fire hall.
- If you have been to our Monthly PLVFD fire practices, you will notice that especially in the winter, there is no room for any sort of training inside the facility. At best, with about 9-12 volunteers in the building for practice, we have less than 2 feet of room between the roll-up door and the front of the trucks parked in there. What is not always understood is, we have enough room to stand and that is all. Imagine 12 guys standing around the hood of a truck talking about what we **WOULD & COULD DO**...given the proper facility.
- A fire department is only as good as its training allows, and currently we do not have adequate room for training or laying out equipment for inspection and maintenance. We have the equipment and gear necessary, but without training to use the equipment & gear...and a fire occurs....? In the warmer months, we can train outside, but what about inclement weather during our practices?
- We as the PLVFD (a fire department) have to **meet certain criteria to maintain certification and accreditation**, which is based on equipment AND training.

---

**BOTTOM LINE:** Keeping the fire department accreditation is critical to our safety as well as taking care of our equipment properly!



# **PAINT LAKE VOLUNTEER FIRE DEPARTMENT FIRE HALL EXPANSION**

## **TO DO THIS, WHAT DOES IT MEAN AND WHAT'S NEXT?**

- The approximate cost of building an addition onto the current Fire Hall is about \$200,000. The plan is a 40' X 60' building, complete with 3 large overhead roll-up doors, enough space to house 3 trucks adequately, and enough space to adequately and properly train volunteer personnel.
  - So far roughly \$80,000 has been raised towards the construction of the new addition.
  - The drawings are in the final stages and are very close to being sent off for approvals and permits.
  - Fund raising events are being planned and held in the coming months and years to help pay for the building.
  - Donations from cottage owners and business owners are always welcomed and never turned down. 😊
  - Construction will likely begin towards the end of summer to early fall, if not sooner. The goal is to have the building finished before winter, but after summer is through and summer family activities have settled down for the year.
-



# **PAINT LAKE VOLUNTEER FIRE DEPARTMENT FIRE HALL EXPANSION**

## **- DOWN TO NUTS & BOLTS - MORE ABOUT THE BLDG -**

- Current Fire Hall to be modified to allow for a handicap accessible bathroom and kitchenette for PLVFD & Public use. Kitchenette will be situated with wall & floors cabinets, stove, fridge and sink area for clean-up.
  - New building becomes Fire Hall and existing building becomes Community Building.
  - The Community Building can be used for Public Meetings, Craft Sales, Christmas & Special Events, etc.
  - With the current facilities we cannot house the equipment needed, and do the training we are required to have.
  - One of the highest risks living in The North...summertime Forest Fires, and we live right in the middle of the Boreal Forest, surrounded by trees.
  - In a Community such as ours, the Community Building AND the Fire Hall should be the nucleus to Unite our Community.
-

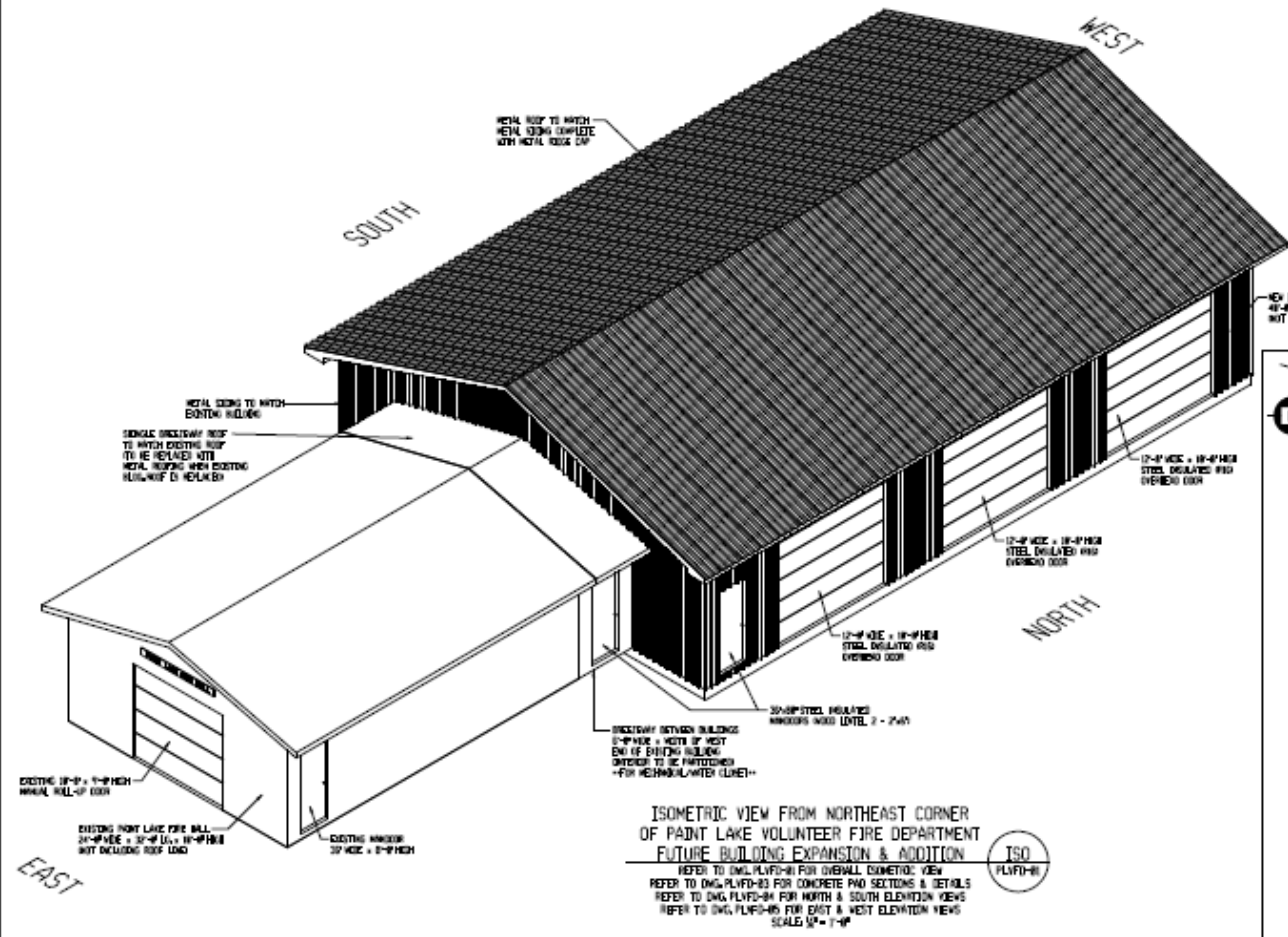


---

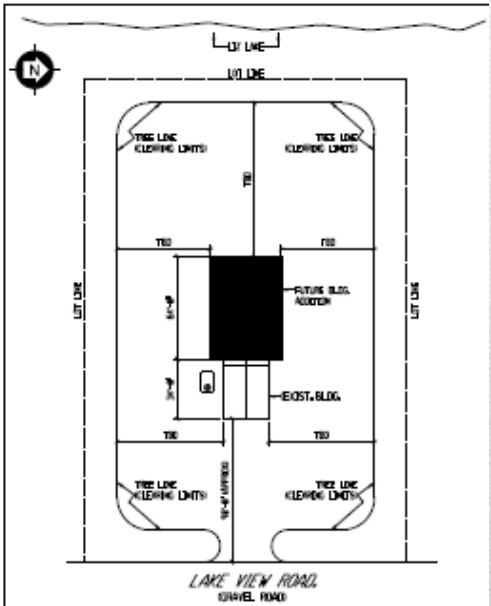
**Thank you for your Time & Patience.** (Thompson Fire Dept. Chief to speak)

# CONCEPTUAL

THIS DRAWING IS FOR DISCUSSION ONLY  
AND IS NOT  
TO BE USED FOR CONSTRUCTION



EXIST. FIRE BALL MOUNT  
12'-0" HIGH x 24'-0" DIA. x 12'-0" HIGH  
NOT INCLUDING ROOF LOAD



ISOMETRIC VIEW FROM NORTHEAST CORNER  
OF PAINT LAKE VOLUNTEER FIRE DEPARTMENT  
FUTURE BUILDING EXPANSION & ADDITION  
REFER TO DWG. PLVFD-01 FOR OVERALL ISOMETRIC VIEW  
REFER TO DWG. PLVFD-03 FOR CONCRETE PAD SECTIONS & DETAILS  
REFER TO DWG. PLVFD-04 FOR NORTH & SOUTH ELEVATION VIEWS  
REFER TO DWG. PLVFD-05 FOR EAST & WEST ELEVATION VIEWS  
SCALE 3/4" = 1'-0"

ISO  
PLVFD-01



PAINT LAKE VOLUNTEER FIRE DEPARTMENT  
501 524 THOMPSON RD. BOX 1807  
PAINT LAKE, IDAHO 83429

**FIRE CHIEF**  
JIM DENNIS

**VOLUNTEER**  
LORNE TREMPER  
TED FRANKLIN  
BOB LANGRISH  
JEFF JORDAN

**ENGINE DIVISION**  
WALTER LUTY  
DAVE ANDERSON  
DON HERRMANN

**WATER DIVISION**  
TERRY COPPEL  
SCOTT LARSEN  
AL WATERS

**TRAINING DIVISION**  
PAT ANDERSON  
KELLY GARDNER  
CARRIE MCGONISH

**UTILITY DIVISION**  
TOM CARROLL  
MARCUS CAMPBELL  
TROY STANLEY

**ADMINISTRATIVE**  
MARK MCELLENDEN  
FRANK SCHMIDT  
DANNY ROBERT  
JIM MICHAELS

DESIGNED BY	PAUL L. GORDE	DWG. CHECKED BY	JEFFREY S. HARRIS	DRAWING No.	PLVFD-01	NO. OF SHEETS	1
CONCRETE CONTRACTOR	XXXXXXXXXXXXXXXXXXXX	DESIGNED BY	PAUL L. GORDE	DATE	2/24/2014	PROJECT	PAINT LAKE VOLUNTEER FIRE DEPARTMENT - FUTURE BLDG. ADDITION
STEEL CONTRACTOR	XXXXXXXXXXXXXXXXXXXX	DATE	XXXXXXXXXXXX	SCALE	3/4" = 1'-0"		
ROOFING CONTRACTOR	XXXXXXXXXXXXXXXXXXXX	SCALE	XXXXXXXXXXXX				
MECHANICAL CONTRACTOR	XXXXXXXXXXXXXXXXXXXX						
ELECTRICAL CONTRACTOR	XXXXXXXXXXXXXXXXXXXX						
PLUMBING CONTRACTOR	XXXXXXXXXXXXXXXXXXXX						
GLASS CONTRACTOR	XXXXXXXXXXXXXXXXXXXX						
PAINT CONTRACTOR	XXXXXXXXXXXXXXXXXXXX						
LANDSCAPE CONTRACTOR	XXXXXXXXXXXXXXXXXXXX						
ARCHITECT	XXXXXXXXXXXXXXXXXXXX						